



CATALOG NUMBER	TYPE
PROJECT NAME	DATE

## SPECIFICATIONS

### FEATURES

- L.E.D. interior step, corridor, and walkway light
- Designed for recessed wall mounting

### CONSTRUCTION

- Galvanized steel housing
- Factory pre-assembled and supplied with all necessary mounting brackets/straps needed for all applications
- Box is completely finished in high-reflectance white (85%) powder coat.

### LAMP

- 12 white LEDs can be used as a direct or indirect lighting source

### ELECTRONICS

- All units are factory wired, assembled, and shipped complete with LEDs
- 120/277 VAC input draws a maximum of 3 watts

### BATTERY

- Nickel-cadmium battery comes standard for EM option
- Provides a minimum of 90 minutes of operation upon loss of AC power

### COMPLIANCE

- Meets UL standards

### WARRANTY

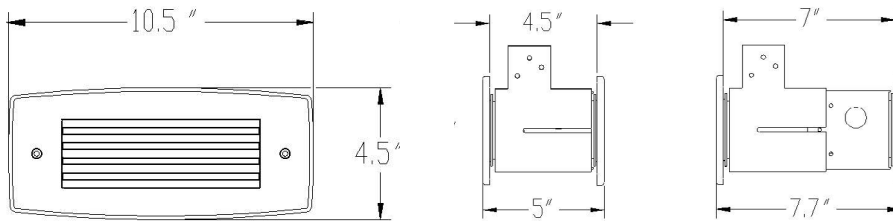
- 3-year limited warranty

## NL NIGHTLIGHT

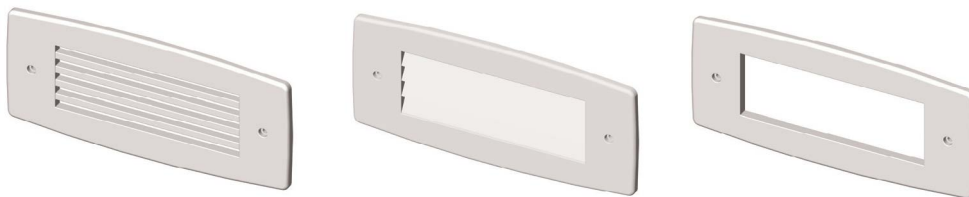
L.E.D. STEP, CORRIDOR, AND WALKWAY LIGHT



## DIMENSIONS



## FACEPLATE DESIGNS



## ORDERING GUIDE

MODEL	FACEPLATE	FINISH	OPTIONS
<b>NL</b> Indoor/Outdoor Step Light	<b>FL</b> <sup>1</sup> Full Opal Lens <b>AL</b> Angled Louvers <b>SL</b> Straight Louvers	<b>BA</b> Brushed Aluminum <b>WH</b> White <b>BL</b> Black <b>BR</b> Bronze	<b>EM</b> Battery Backup <b>TPS</b> Tamperproof Screws <b>TPSD</b> Tamperproof Screwdriver <b>SW</b> Toggle Switch <b>AMB</b> Amber LEDs

### Notes:

1. Includes Opal Poly Lens